

EMODnet

*Ingestion and
safe-keeping of
marine data*

emodnet-ingestion.eu



Peter Thijsse - MARIS

18 May 2017
EMD Poole (UK)



About EMODnet

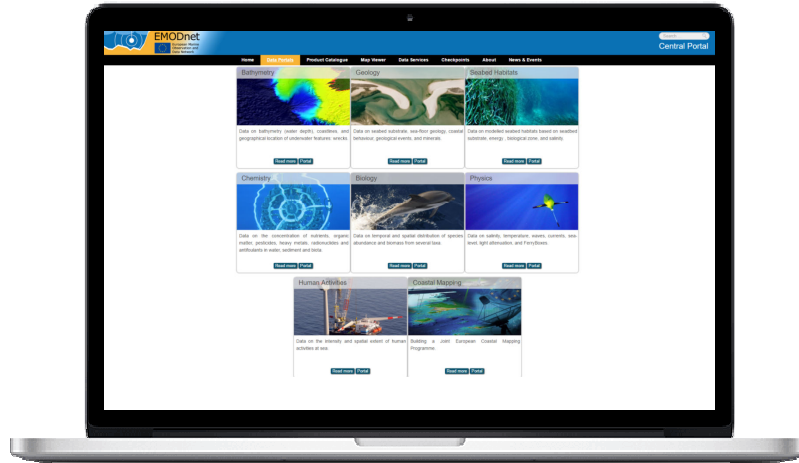
EMODnet, the European Marine Observation and Data Network, has over 150 organisations that work together to assemble and harmonise marine data, metadata and products, making them more accessible to Blue Society.



EMODnet central portal



www.emodnet.eu



EMODnet context



Thanks to EMODnet, marine data now have their

“ONE-STOP-SHOP”

easy to find, freely available, interoperable & reliable

Quality controlled & accurate data of the maritime environment are
critical to underpin the sustainable growth of **Blue Society**.

However, many data collected by

public authorities

researchers

private operators of coastal or offshore facilities

- still do not arrive to the national or regional repositories
- are unavailable to scientists, engineers and other potential users.

EMODnet Ingestion and safekeeping objective



*“ To develop and operate a **new EMODnet portal** with services that **facilitate and streamline** the process whereby **marine data from whatever source** is delivered on a **voluntary basis** for further **processing and safekeeping** by **data repositories** and subsequent **distribution through EMODnet thematic portals** ”*

Using a dedicated portal from which specific data set handling processes are initiated.

Relying on 100+ existing data managing organizations in EMODnet: 44 Partners and other organisations involved in EMODNet lots: NODCs, Hydrographic Offices, Geological institutes, Biological institutes, Marine research institutes ...

Targeting data providers & their data that are not yet handled or part of the mainstream processes of these data repositories

EMODnet principle of ingestion data flow



The EMODnet Ingestion services will serve all EMODnet thematic portals for streamlining incoming data sets

External
Data
Providers



For more info, please visit www.emodnet-ingestion.eu

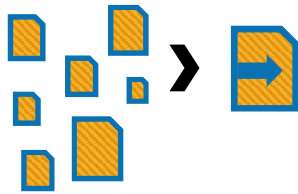
EMODnet principle of ingestion data flow



The EMODnet Ingestion services will serve all EMODnet thematic portals for streamlining incoming data sets

External
Data
Providers

**Data
Ingestion
Portal**



For more info, please visit www.emodnet-ingestion.eu

EMODnet principle of ingestion data flow



The EMODnet Ingestion services will serve all EMODnet thematic portals for streamlining incoming data sets

External
Data
Providers

**Data
Ingestion
Portal**

Data
Centres

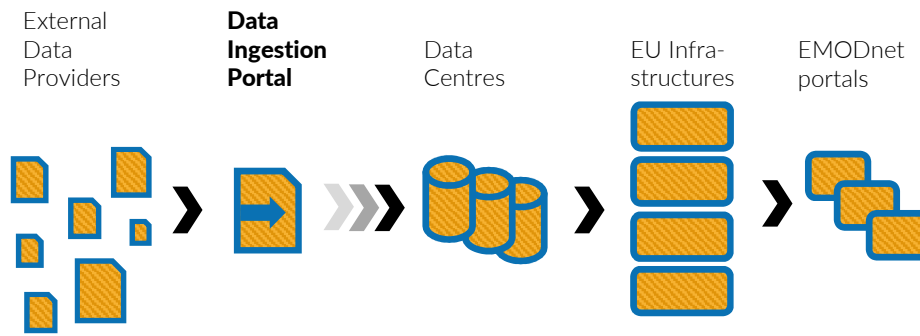


For more info, please visit www.emodnet-ingestion.eu

EMODnet principle of ingestion data flow



The EMODnet Ingestion services will serve all EMODnet thematic portals for streamlining incoming data sets



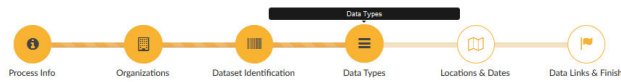
For more info, please visit www.emodnet-ingestion.eu

Submission form on website



EMODnet Data Ingestion Portal
European Marine Observation and Data Network
Data Submission Service

GO TO WEBSITE | # DASHBOARD | BACK TO LIST WELCOME ATHANASIA IONA (DS) | LOGOUT



Data Types

DATASET COLLECTION AND PROCESSING INFORMATION * = Required

Project / Programme

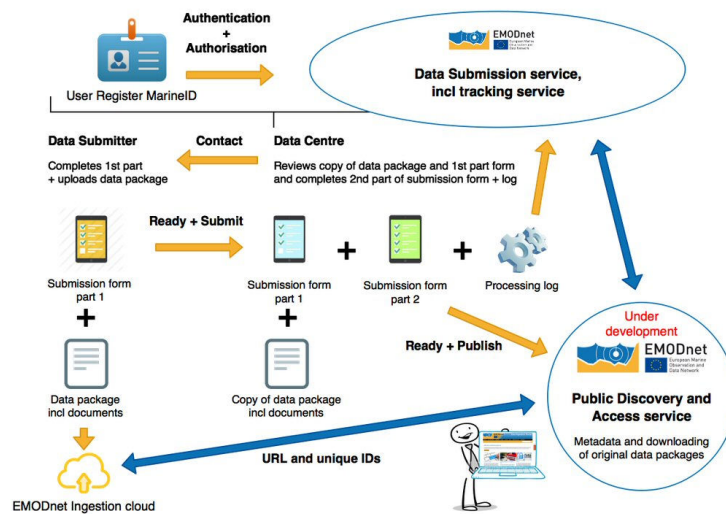
Summary of processing methodology

OBSERVATIONS

Observation Type

PREVIOUS **CONTINUE**

Submission process in more detail



How to identify relevant new marine data



- The **challenge** is to identify relevant marine data providers that are **not yet routinely submitting data sets** to national data repositories and to convince and help them to submit their data packages for open access and use in national repositories and EMODnet
- The priority for exploring external data sets will be set by the EMODnet Thematic portals that are interested in a specific collection of data types
- All project partners will analyse the situation in their country and identify potential data sources and their providers for the different data themes, taking into account the priorities
- Promotion and marketing will be essential and will be a combination of central and networked activities, involving all partners and thematic portals, and also promoting specific use cases such as monitoring data from offshore wind farms

Ways to involve industry

1. Pull: Demonstrate added value

- Through the use of value adding EMODnet dataproducts attract industry partners to participate and share their own data to be used in the products
- Educate datamanagement at national level and in national workshops
- Cooperate and demonstrate successful use cases

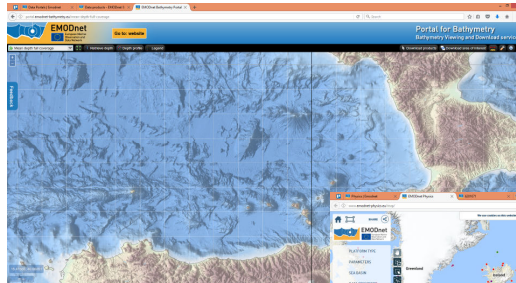
Monitoring data from windfarms in the Dutch North Sea sector



Renewable energy development data in the UK (Crown Estate)

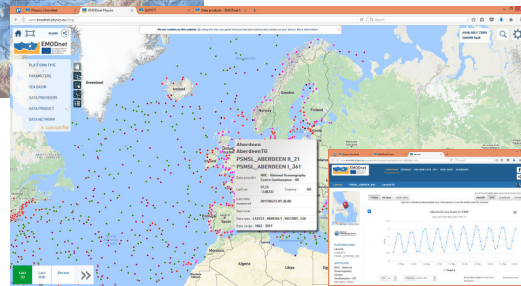


EMODNet products relevant for industry



EMODnet bathymetric product

EMODnet physics overview of all operational stations



Share your data to improve this product?

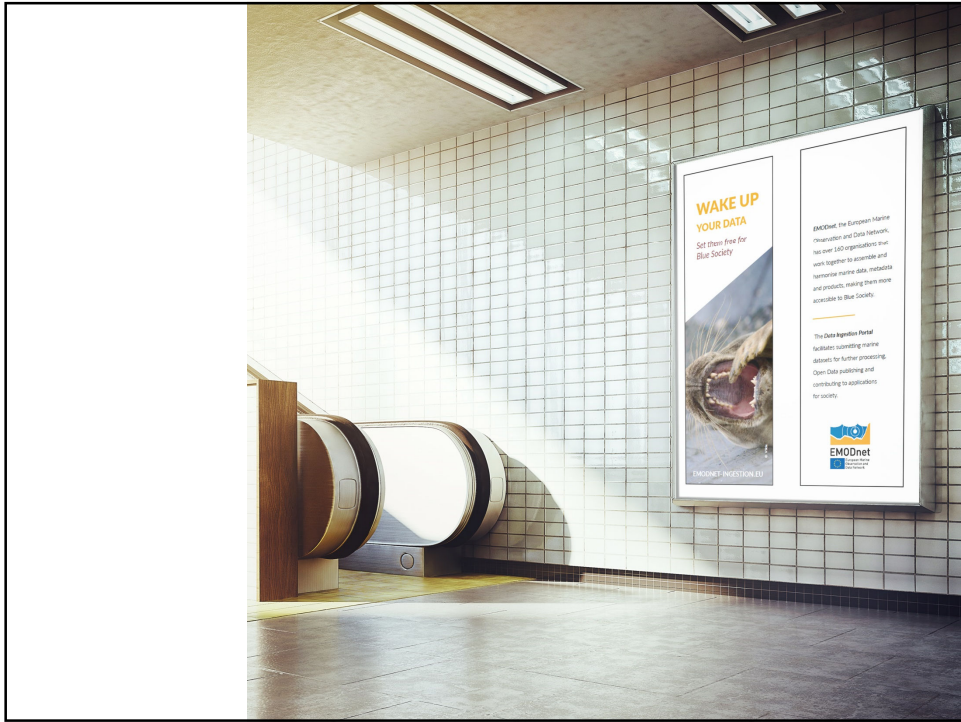
2. Push



- National legislation to stimulate public data sharing of monitoring data for governmental contracts, OWE licensing etc.
=> Our experience: Data is often already shared but ends up in the wrong place, not in a clear central archive/data center.
- Point at societal responsibilities of industry e.g. related to climate change (Good will)

3. Promotion and dissemination campaign





EMODnet data ingestion portal

www.emodnet-ingestion.eu



Contact: Peter@maris.nl